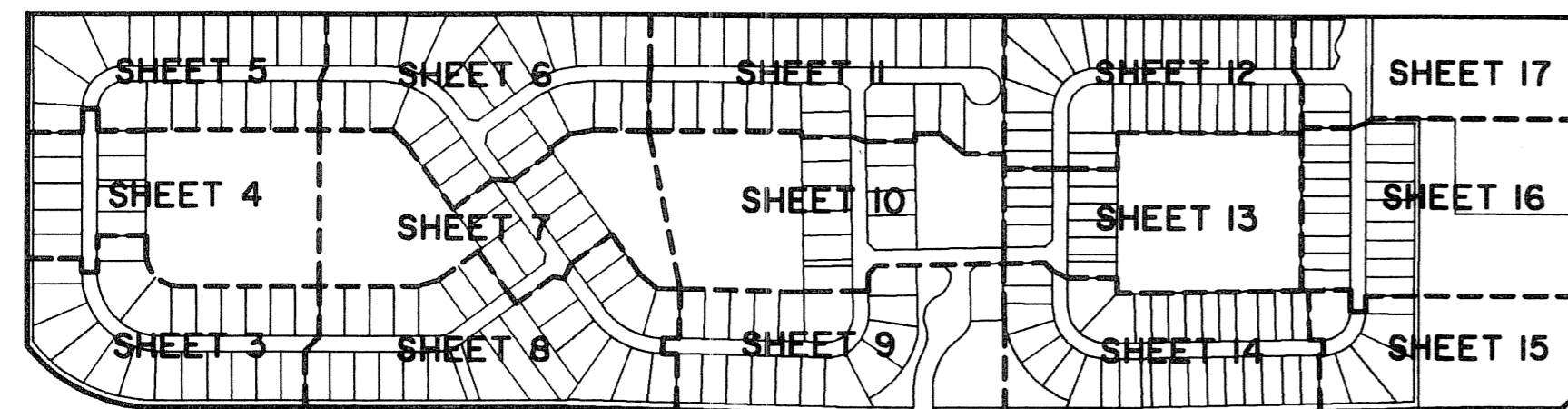


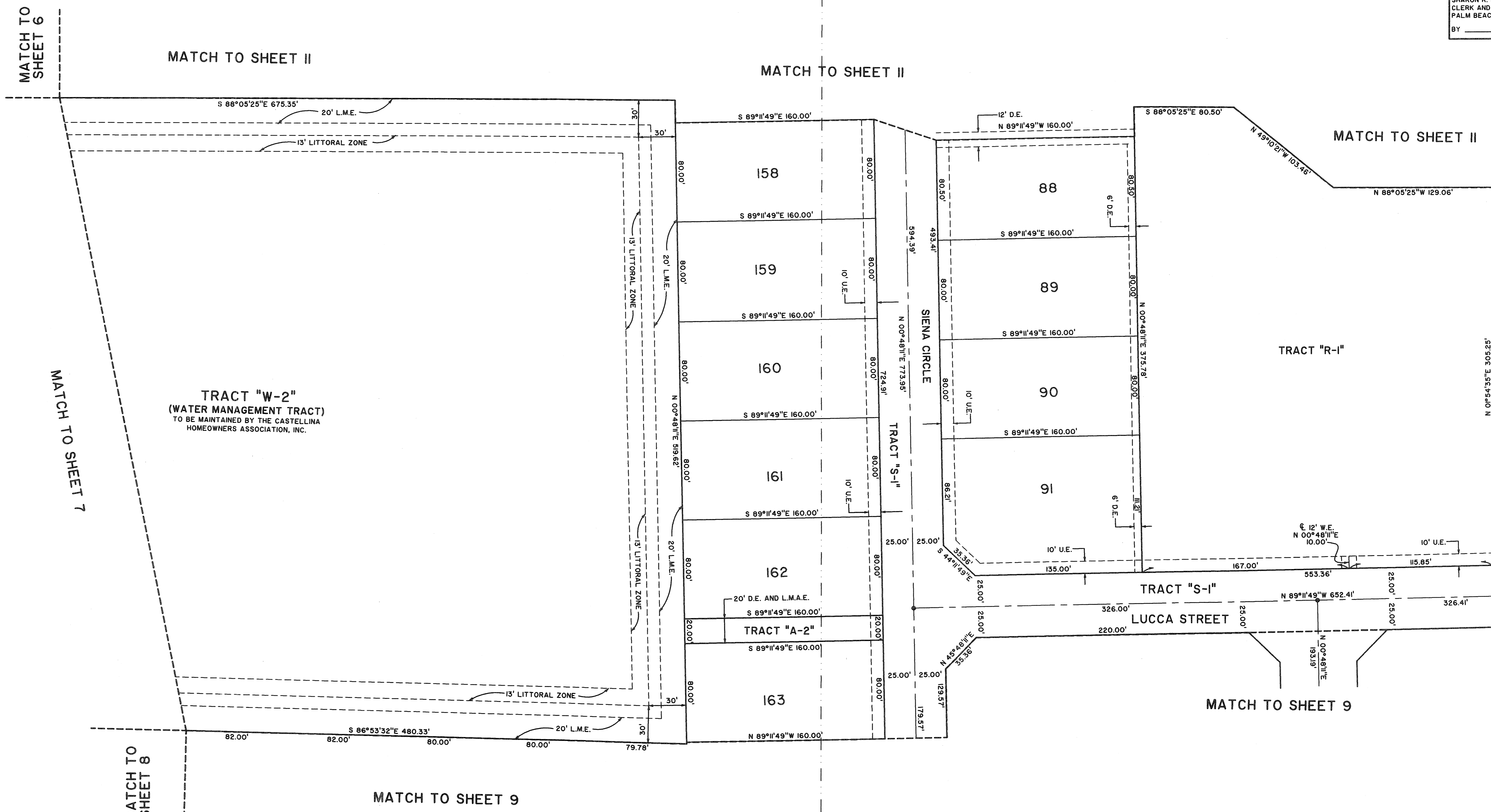
# LANIER PROPERTY

LYING IN SECTION 13, TOWNSHIP 44 SOUTH, RANGE 41 EAST,  
VILLAGE OF WELLINGTON, PALM BEACH COUNTY, FLORIDA.  
SHEET 10 OF 17 MARCH, 2006

STATE OF FLORIDA SS  
COUNTY OF PALM BEACH  
THIS PLAT WAS FILED FOR RECORD AT \_\_\_\_\_  
M. THIS \_\_\_\_\_ DAY OF \_\_\_\_\_ 2006  
AND DULY RECORDED IN PLAT BOOK NO. \_\_\_\_\_  
ON PAGE \_\_\_\_\_  
SHARON R. BOCK,  
CLERK AND COMPTROLLER,  
PALM BEACH COUNTY  
BY \_\_\_\_\_ D.C.



KEY MAP  
NOT TO SCALE



TRACT "W-2"  
(WATER MANAGEMENT TRACT)  
TO BE MAINTAINED BY THE CASTELLINA  
HOMEOWNERS ASSOCIATION, INC.

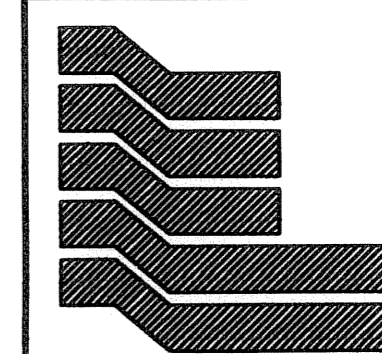
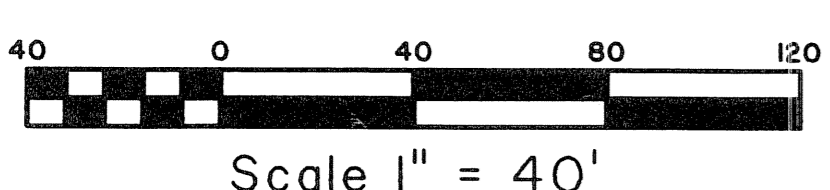
TRACT "A-2"

TRACT "S-1"

TRACT "R-1"

TRACT "S-1"

LUCCA STREET



Landmark Surveying & Mapping Inc.  
1850 Forest Hill Boulevard  
Ph. (561) 433-5405 Suite 100 W.P.B. Florida  
LB # 4396

LANIER PROPERTY